

# Clear Creek Republican Women



"...the new stars on the horizon."

## October 2010 Newsletter

[www.clearcreekrw.org](http://www.clearcreekrw.org)

Carole Alexander, Editor

[caroleannealexander@yahoo.com](mailto:caroleannealexander@yahoo.com)

### Calendar

**October 7<sup>th</sup>, 14<sup>th</sup>, 21<sup>st</sup>, 28<sup>th</sup>.**

Galveston Island Pachyderms meet at Olympia Grill Pier 21 on Galveston Island every Thursday, 12:00-1:00 p.m.

#### **October 1st.**

CCRW officer meeting 9:30 a.m. at Esteban's Fiesta Shack, 402 W. Main St., League City, TX.

#### **October 1st.**

Clear Creek Republican Women Meet the first Friday, at Esteban's Fiesta Shack, 402 West Main Street, League City, 11:30 a.m. Social/Lunch Meeting 12-1 p.m. Mark Henry, candidate for County Judge, will be the guest speaker.

#### **October 20<sup>th</sup>.**

Galveston Republican Women meet the third Wednesday at Willie G's at Pier 21, 11:30a.m.

#### **October 21st.**

Republican Network meets the third Thursday 6:30 p.m. at La Brisa's off I45 behind Sudies, League City.

#### **October 26<sup>th</sup>.**

Sandpipers Republican Women of Galveston meets fourth Tuesday at Galveston Country Club 14228 Stewart Rd, Galveston.

#### **October 27th.**

Bay Area RW meet fourth Wednesday at Bailey's Grill, Seabrook 11:30 a.m.

#### **October 28th.**

Friendswood RW meet fourth Thursday at Perry's Grill Friendswood 11:15a.m.

### *October 1st. 2010 Meeting presents Galveston County Republican Senate District 11 Committeeman Dennis Paul*



Dennis Paul has been a life long resident of SD11. He and his wife have been married for 23 years, their 15 year old daughter attends St. Agnes Academy in Houston. They are members of St. Bernadette Catholic Church, where they are very active.

Dennis is the owner of Paul Engineering in Webster, and they do business in all three counties of SD11. He has been an engineer for 24 years and earned his bachelor and master degree from the University of Houston.

He has a long history of service and volunteer work for the Republican Party, and he currently serves us on the State Republican Executive Committee.

With Election Day just around the corner, we know that Dennis will motivate us into action!



## *From the President*

### Pledge to GOP Candidates

Upon reading the Republican Pledge to America, I thought it was equally important for voters to pledge their support to the GOP, and this is what I came up with:

“As a Republican, I hereby pledge my unequivocal support of the Republican Candidates in Galveston County.”

Merriam Webster’s dictionary defines unequivocal as: leaving no doubt; clear; and unquestionable. Yep, that covers it, and EVERY Republican should make this pledge.

Friends, I am appalled to hear that some local Republicans are telling voters to “Vote the person, not the party”. This is WRONG! We are blessed with terrific candidates, each of whom will work hard, serve well, and make us proud after they are elected!

Do not become complacent and think they will win on the national GOP coattails. This is Galveston County where the democrats will do and say anything to stay in office. Have you seen billboards around town? There is NO mention of their party affiliation!

Indeed, the dems are running as “hard working, friends and neighbors. Don’t be fooled.

They are wolves in sheep’s clothing! They embrace Obama! They are tax and spend liberals, who want to elect Bill White this year; and re-elect Obama in 2012.

No self-respecting Republican, true to conservative principles, would vote for a democrat when we have so many well-qualified, capable Republican candidates! My good friend Andy has long said, “A bad Republican is better than a good democrat”, and he’s right!

2010 is THE YEAR for Republican victories in Galveston County! I have publicly proclaimed my support for Republican candidates, and I hope you do, too.

Let’s get together and stir-up a Republican frenzy next Friday, October 1<sup>st</sup> at Esteban’s Fiesta Shack! See you there!

*Barbara Meeks*  
*President*



### *Community Outreach*

Outreach plans are being made for the Christmas season to provide food and gifts for families served by the Lighthouse Ministries. More information will be available in the November issue. Plans are being made for CCRW to continue their tradition of decorating a Christmas tree for Interfaith Caring Ministries. If you have any patriotic ornaments to donate, please let me know so that they can be used for the tree.

*Sarah Von Dran, Community Outreach*

## Membership Memo

We have 76 full members and 49 associate members. Now is the time to renew your membership for the 2011 year. New members that pay now receive credit for 2010 and the entire year of 2011.. Applications will be available at the October meeting. Dues are \$25 for full member and \$15 for associate membership.

Renewal of membership received for Betty Suagee, Denice Ruggeri, Mary Eillen Torrance and husband George, Karen Abshire, and Kevin Walsh. Welcome back.

*Sarah Von Dran 1<sup>st</sup> Vice President  
Membership*

## October Birthdays



2<sup>nd</sup>. Arlene Menchaca  
9<sup>th</sup>. Dwight Sullivan  
20<sup>th</sup>. Claudette Gage  
21<sup>st</sup>. Sarah Von Dran  
28<sup>th</sup>. Diane Kerkove

## *Clear Creek Republican Women*

### *September 3, 2010 Minutes*

President Barbara Meeks called the Clear Creek Republican Women's meeting to order at 12 noon on Friday, September 3, 2010 at Esteban's Fiesta Shack in League City. Bonny Wilson led us in prayer followed by the Pledge of Allegiance led by Jason Murray and the Texas Pledge led by Dennis Paul.

Barbara introduced the 7 elected officials, the 5 candidates attending and the 8 guests.

**Barbara Meeks** introduced Candidate Mark Henry our guest speaker. Shirley Hendrickson, V.P. of Programs was on a long overdue vacation.

The business meeting resumed at 12:45 p.m.

The minutes of the August 6, 2010 meeting that were published in the newsletter were approved with no corrections.

**Lesley Bruemmer** gave the Treasurer's Report stating that we have an ending balance of \$1913.98, as published in the newsletter. There were no corrections and the report will stand for internal review.

## OFFICERS REPORTS

**V. P. Membership:** Sarah Von Dran reported that we have 75 full memberships and 48 associate members.

**V. P. Programs:** Shirley Hendrickson is on vacation, so the guest speaker for October will be announced on her return.

## COMMITTEE REPORTS

Campaign Activities – Rebecca Allcorn reporter that for the Month of August we had 875.5 hours, and the year to date is 6512 hours.

Community Outreach – Sarah Von Dran reported that they had put in a total of 330 hours at the Mall of the Mainland's Medical check up.

## SPECIAL COMMITTEE REPORT:

The nominating committee consisting of Cindy Seidensticker, Benny Cheney and Sarah Von Dran gave their report.

PAC Treasurer Lesley Bruemmer  
Recording Secretary Penny Ignazio  
Corresponding Secretary Natalie Roth  
V.P. Programming Tommye Randolph  
V.P. Membership Evelyn Garland  
President Sarah Von Dran

## NEW BUSINESS

Dennis Paul our SD 11 representative presented Jason Murray with a check. Elyse Derean – Gov. Rick Perry representative spoke about recruiting new members to help get the vote out and getting people to the polls.

## ANNOUNCEMENTS

Cindy Seidensticker and Kathy Nenninger on November 28, 2010 will be in charge of decorating the Christmas Tree again this year. Volunteers needed.

Phone Banks and Block Walking have begun, volunteers are needed.

Phone Calls are done in Congressman Pete Olson's office for our local candidates and Cong. Pete Olson. The office is on Diana Street, just off Bay Area Blvd. Hours are from 9 am to 5 pm, so please come on in and help. Block Walking is done on Tuesday, Thursday and Saturday for now, beginning in October it will be every day. So if you can't walk, you can drive, but we need all the help we can get. So come by Republican Headquarters any day by 4 p.m. during the week and 10 am on Saturday and help our candidates walk

Simon Urbanic announced the Republican Network will meet Thursday September 16, 2010 at La Brisa, at 6:30 p.m. Our guest speakers will be the Court of Appeals Judges. Betty Moss will be registering voters at the Krogers' on FM 96, date and time will be announced.

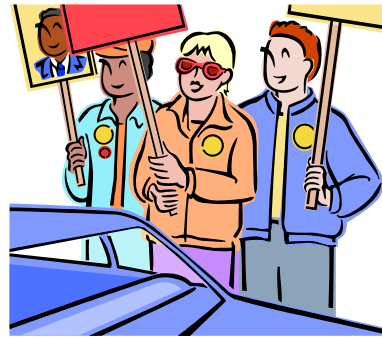
Early voting begins October 18 thru October 29, 2010; Election Day is November 2, 2010. Larry Taylor announced that his fund raiser will be October 4, 2010.

Ken Clark spoke on the trial lawyers who are donating large sums of money to the Democratic Party. So we need donations for our mailings to help our candidates. Ron Paul made an announcement that he will match funds of \$8000.00 to help the candidates. So we must raise the funds. Each mailing is over \$16,000.00 each.

The meeting was adjourned at 1:15 p.m.

*Penny Ignazio,  
Recording Secretary*

## *Campaign Activities*



Members and associate members have reported 937.5 volunteer hours for the month of August. Year to date total is 6574!!!

September hours are due Thursday, Sept. 30. Let me remind you of the Volunteer Incentive program sponsored by Joe Strauss, Texas State Speaker of the House. The Republican Woman Club with the most volunteer hours from April 15, -November 2, 2010 will win monetary reward. CCRW has a great opportunity to earn recognition and \$1000 reward. It is not too late to report your past hours. Please look back over your calendar and add up your hours from mid April through today. **Associate members**, your hours count as well. If you are not reporting to another RW club CCRW would love to collect your hours. **Candidates**, please consider reporting your hard earned hours on the campaign trail to CCRW

*Rebecca Allcorn  
Campaign Activities*



## *Treasurers Report*\_\_\_\_\_

Beginning Balance                      \$ 2238.98

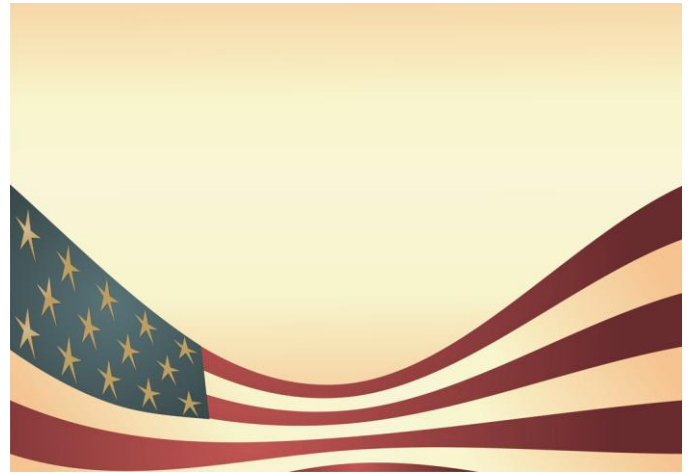
*Lesley Bruemmer  
Treasurer*

### CCRW 2010 Officers

President	Barbara Meeks	281-236-3566
1st VP Membership	Sarah Von Dran	281-482-2990
2nd VP Programs	Shirley Hendrickson	832-221-0419
Recording Secretary	Penny Ignazio	281-334-4418
Corresponding Secretary	Benny Cheney	713-367-5951
Treasurer	Lesley Bruemmer	832-632-2880

### CCRW 2011 Officers

President	Sarah Von Dran	281-482-2990
1st VP Membership	Evelyn Garland	
2nd VP Programs	Rommye Randolph	
Recording Secretary	Penny Ignazio	281-334-4418
Corresponding Secretary	Natalie Roth	
Treasurer	Lesley Bruemmer	832-632-2880



*News Editor Corner*\_\_\_\_\_

*Volunteers needed in Headquarters*

*Call 281-554-8888*

### **NOVEMBER ELECTIONS JUST AROUND THE CORNER**

October 4, 2010 (moves to next business day, Monday) - Last Day to Register to Vote  
October 18, 2010 (moves to next business day, Monday) - First Day of Early Voting  
October 26, 2010 - Last Day to Apply for Ballot by Mail (Received, not Postmarked)  
October 29, 2010 - Last Day of Early Voting  
The window of opportunity to affect the 2010 election is very small, so let's make every moment count! Get involved by:

- \* Attending candidate events
- \* Choosing a candidate to support with your time or money
- \* Signing up with the county clerk to work elections
- \* Hosting neighborhood group meetings in your area.

You can make the difference in November!



**GET READY TO TAKE BACK  
OUR COUNTRY**

**Clear Creek Republican Women PAC**  
**Galveston County, Texas**  
**2011 Membership Application**

Name \_\_\_\_\_

Spouse \_\_\_\_\_

Occupation \_\_\_\_\_

Address \_\_\_\_\_

City \_\_\_\_\_ ZIP + 4 \_\_\_\_\_ Precinct \_\_\_\_\_

Telephone (H) \_\_\_\_\_ (W) \_\_\_\_\_

(C) \_\_\_\_\_ Email \_\_\_\_\_

Birthday month/day \_\_\_\_\_

\_\_\_\_\_ Full Member \$25.00

\_\_\_\_\_ **Associate Member \$10.00**

\_\_\_\_\_ **Member of another Club?** \_\_\_ Yes \_\_\_ No

**If yes, name of Club** \_\_\_\_\_

*Date Paid* \_\_\_\_\_ *Cash/Check* \_\_\_\_\_

I would like to help with the following committees:

\_\_\_ Audit \_\_\_ Awards \_\_\_ By-Laws \_\_\_ Campaigns

\_\_\_ CCRW Directory \_\_\_ Community Outreach \_\_\_ Historian

\_\_\_ Hospitality \_\_\_ ICM Tree \_\_\_ Legislation \_\_\_ Newsletter

\_\_\_ Publicity \_\_\_ Telephone \_\_\_ Ways & Means \_\_\_ Web

How did you learn about CCRW?

\_\_\_\_\_

Prior political affiliations \_\_\_\_\_

Areas of Interest \_\_\_\_\_